


PROMOTING VACCINE UPTAKE IN HARD TO REACH GROUPS: PEOPLE WHO USE DRUGS


JULIE MCFARLANE RGN/NMP
LEAD NURSE IN SUBSTANCE MISUSE

Venue: Queen's Nursing Institute, Cardiff
Date: 15th October 2015

BACKGROUND

People who use drugs (PWUD) may be at higher risk of developing complications of influenza due to a number of reasons:

- Homelessness, unemployment and poverty
 - Ageing cohort
 - Diagnosed & undiagnosed chronic conditions
 - Poor nutrition and general health neglect
 - Some less likely to visit GP
- 

- **Concern about deaths among PWUD from bronchopneumonia**
 - **Addaction St Helens were approached by NHS England, Merseyside Area Team**
 - **‘Out of Practice’ Service Specification**
- 

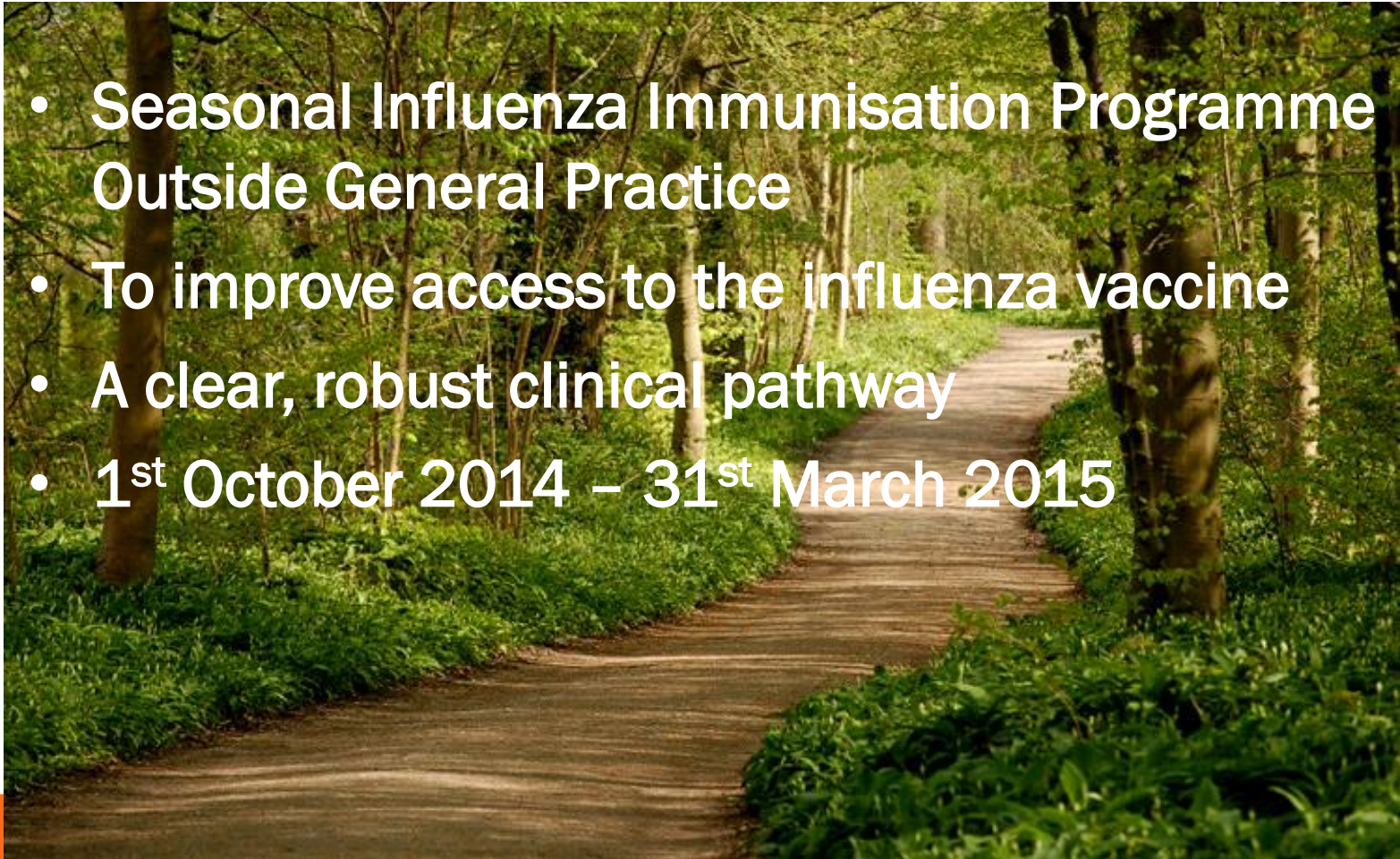
AIMS

Public Health England and **NHS England** set up a pilot scheme with the aim of improving up take of the seasonal influenza vaccination in ‘**hard-to-reach**’ groups.

Addaction St Helens applied to take part in the scheme with the aim of reducing the risk of influenza and pneumonia in a **high risk population**.

CARE PATHWAY

- Seasonal Influenza Immunisation Programme Outside General Practice
- To improve access to the influenza vaccine
- A clear, robust clinical pathway
- 1st October 2014 – 31st March 2015

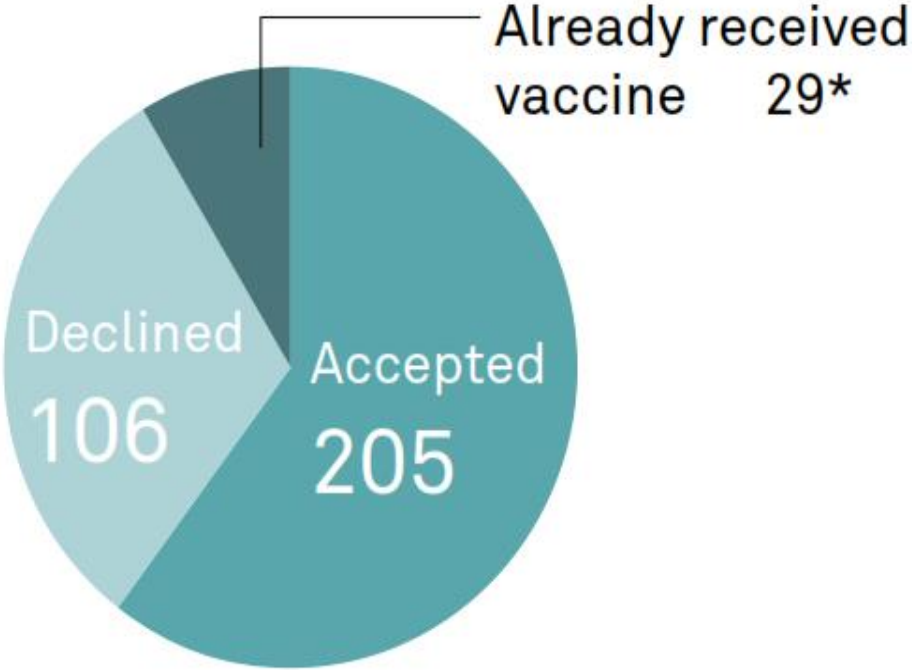


SUBSTANCE MISUSE IN ST HELENS

- Population = 176,000
- Addaction is the sole provider of alcohol and drug services in St Helens.
- Over 500 individuals on a prescription for methadone or buprenorphine.




NUMBER OF SERVICE USERS TAKING UP OFFER OF INFLUENZA VACCINATION (OCT 14-MARCH 15)



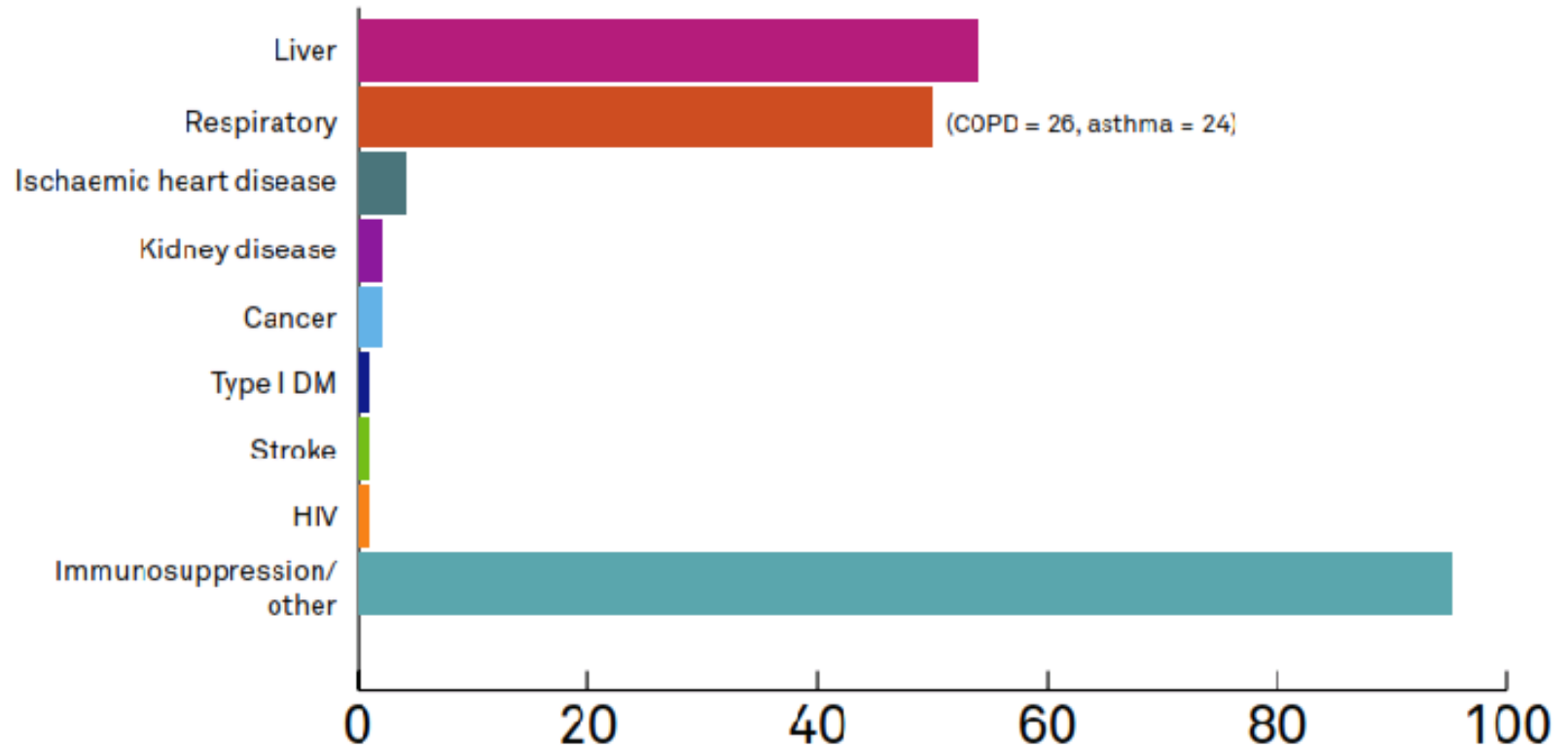
*14 – pharmacist, 10 – GP, 1 – prison, 4 - not sure

CHRONIC DISEASES IN PWUD


February 2014

- 503 service users on an opioid substitution therapy (OST) prescription
 - Audit of 185 case notes (37%)
 - 97 individuals (52%) diagnosed with one or more long-term conditions on GP summary
- 

CHRONIC DISEASE RESULTS



IMPLEMENTATION

- A number of meetings
 - A Patient Group Direction (PGD)
 - Signed up to the service
 - Leaflets and posters
 - Confirmation of cold chain
 - Training update for nurses
 - An evaluation at the end of pilot scheme
- 

OUTCOMES

- Individuals accessed the influenza vaccination who may not have otherwise done so.
- No recorded hospital admissions or deaths amongst the individuals who had received the vaccination.

NEXT STEPS

- We are currently rolling out the seasonal influenza vaccine to all service users for the 2015-2016 season.
- Continue to sign post to GPs.
- Provide advice and information to all service users.



ANY QUESTIONS?



REFERENCES

1. Recovery Orientated Drug Treatment Expert Group (2012) Medications in Recovery: Re-Orientating Drug Dependence Treatment. London: National Treatment Agency for Substance Misuse. Available at: <http://www.nta.nhs.uk/uploads/medications-in-recovery-main-report3.pdf>

2. St Helens Joint Strategic Needs Assessment Update (2013), Executive Summary, St Helens Public Council and St Helens Clinical Commissioning Group. Available at: http://www.sthelens.gov.uk/media/500228/st_helens_jsna_2013_executive_summary.pdf

REFERENCES CONTINUED

3. Tridimas A, Archer T, Rehman Z, Oelbaum S, Burhan H. The prevalence of self-reported respiratory symptoms amongst patients attending a drug dependency clinic. *Thorax*, December 2013; Supplement 111(P126): 126. Available at: <https://www.brit-thoracic.org.uk/document-library/learning-hub/wintermeeting-2013/winter-meeting-2013-abstract-book/>
4. Advisory Council on the Misuse of Drugs (2009) *The Primary Prevention of Hepatitis C Among Injecting Drug Users*, The Home Office. Available at: https://www.gov.uk/government/uploads/system/uploads/attachment_data/file/119144/acmdhepcreport2.pdf

REFERENCES CONTINUED

5. Public health Functions to be exercised by NHS England, Service specification No. 13; Seasonal influenza immunisation programme (2013) Public Health England. Available at: https://www.gov.uk/government/uploads/system/uploads/attachment_data/file/192974/13_Seasonal_flu__service_specification_VARIATION__130422.pdf

