



Council of
Deans of Health

Twenty years of
leadership in education
and research



QNi conference 2017

Professor Brian Webster-Henderson

Chair Council of Deans of Health

September 2017

Anniversary and strategy launch 28 June 2017



#Council20
@councilofdeans



Strategy 2018-2021

- Launched in June 2017 outlines Council's focus in next three years
- Developed within a complex context of change in our sector
- UK-wide multi-professional focus
- Higher education and healthcare policy areas

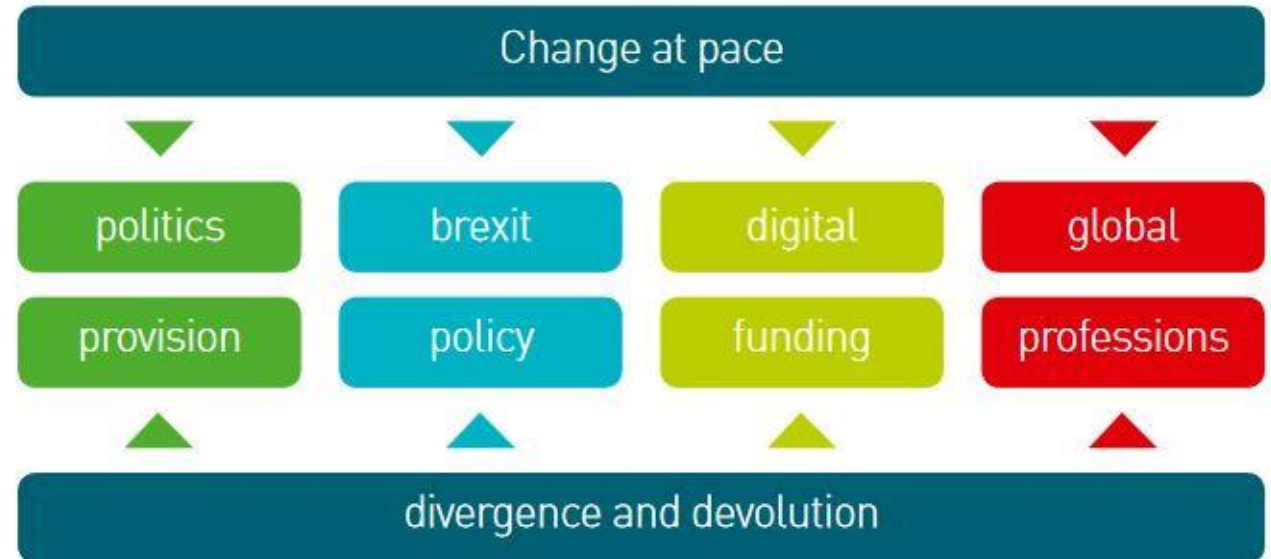


Strategic context

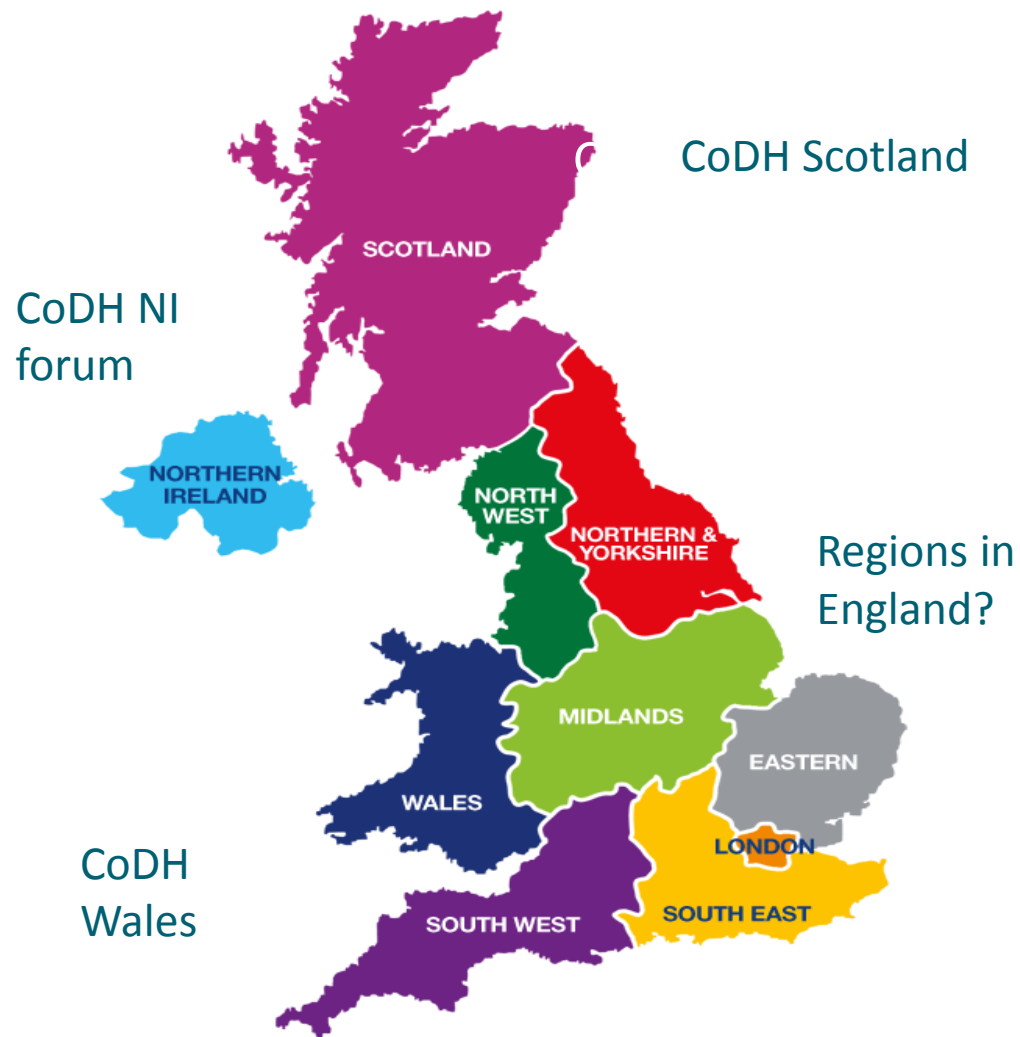


- Constant pace of change
- Stretched services
- Politics of here and now
- No workforce strategy
- Stronger devolution
- Diversity in funding
- Brexit impact
- Digital revolution
- Global issues

Our context is one of change, divergence and devolution



UK wide and devolved



- **Scotland:** new CNO strategy, widening participation agenda
- **Northern Ireland:** political context and Brexit
- **Wales:** new body for commissioning and quality
- **England:** funding reform, new roles in nursing, multiple routes to professions

Strategic priorities

Our priority areas in the next three years

1 Influence policy UK-wide

2 Secure sustainable funding

3 Foster leadership and innovation



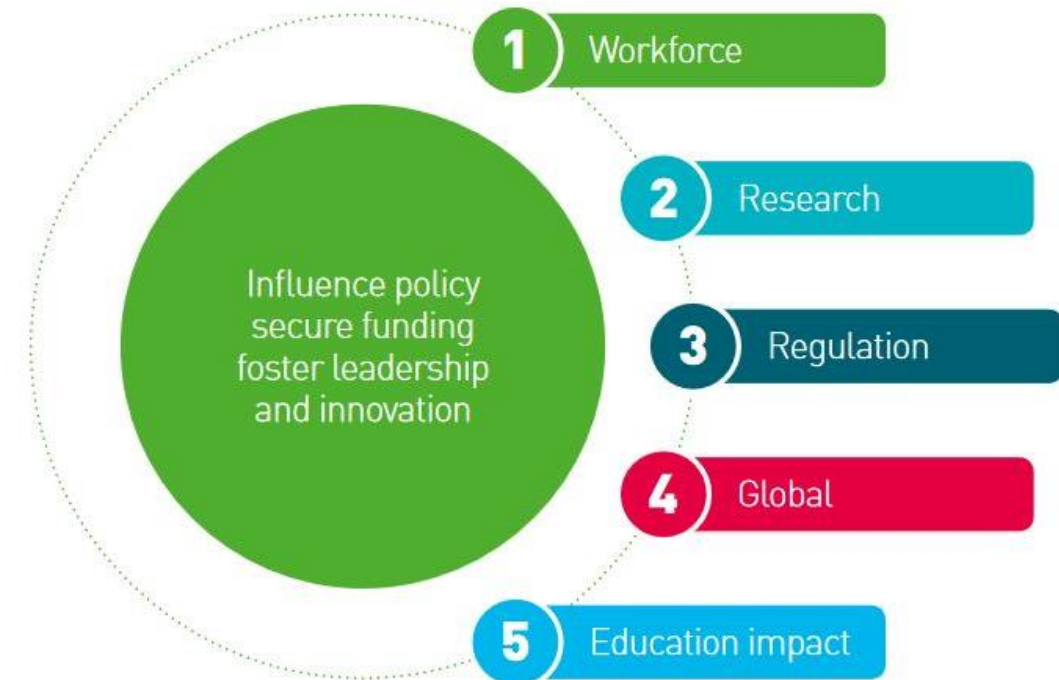
Council of
Deans of Health

**Securing a
Sustainable
Future**
Strategic Plan
2018-2021

Council's focus

- Current and future **workforce**
- **Research** capacity and outcomes
- New standards, alignment HE and healthcare **regulation**
- Brexit and **global** issues
- **Education Impact** e.g. Teaching Excellence Framework and digital advances
- Student leadership

We will focus all our work on five portfolios



Higher education delivery breadth and depth



three year degree/four year
college partnerships
postgraduate 'nurse first'
full-time or part-time study
nursing associate
nursing apprenticeship
return to practice
trained outside the UK



From first registration
to advanced, specialist
and academic workforce/clinical
academic workforce

Higher education delivery challenges



Higher Education regulation
Financial challenges
International decline/growth
Student mental health
Creation of new agencies
Recent scrutiny of salaries

How can we
best support our current workforce?
Do we allow the registered workforce
to advance in their practice?
How do we increase
research and leadership capacity in our
disciplines?

Issues for QNi

- Specialist workforce
- Outdated standards?
- CPD cuts impact
- Global collaboration
- NMC register numbers
- Professions specialisms at risk?

We will focus all our work on five portfolios

